

GPBS-142x Series



FEATURES

- Backlash as Low as 1 arc-min
- Gear Ratios from 3:1 to 100:1
- Long Design Life, Over 20,000 hrs
- Up to 97 Percent Efficiency
- Max Input Speeds up to 6,000 RPM
- Lifetime Lubrication
- Low Noise Helical Gears



DESCRIPTION

The GBPS-142x Series is an In-Line Planetary Helical Gearbox line that offers great prices without sacrificing precision and quality. The GBPS-142x Series is designed for motion control applications requiring moderate backlash and stiffness. Features include backlash as low as 1 arcminute, 22 gear ratios for rated torque up to 4,600 in-lbs (73,600oz-in), (model dependent), a precision clamping system and lifetime lubrication. Please verify all dimensions when matching a gearbox to a specific motor, as critical dimensions will vary among series and manufacturers.

SPECIFICATIONS

Model #	Gear Ratio (X:1)	Rated Output Torque (in-lb)	Max Output Torque (in-lb)	Rated Input Speed (RPM)	Max Input Speed (RPM)	Stages	Backlash (arcmin)	L1 Length (mm)	L2 Length (mm)	Weight (lbs)
GBPS-1421-NM-003-XXXXX-XXX	3	4603	8285	3000	6000	1	1	247	76	27.9
GBPS-1421-NM-004-XXXXX-XXX	4	4868	8762	3000	6000	1	1	247	76	27.9
GBPS-1421-NM-005-XXXXX-XXX	5	4691	8444	3000	6000	1	1	247	76	27.9
GBPS-1421-NM-006-XXXXX-XXX	6	4337	7807	3000	6000	1	1	247	76	27.9
GBPS-1421-NM-007-XXXXX-XXX	7	3983	7169	3000	6000	1	1	247	76	27.9
GBPS-1421-NM-008-XXXXX-XXX	8	3452	6213	3000	6000	1	1	247	76	27.9
GBPS-1421-NM-009-XXXXX-XXX	9	3186	5735	3000	6000	1	1	247	76	27.9
GBPS-1421-NM-010-XXXXX-XXX	10	3186	5735	3000	6000	1	1	247	76	27.9
GBPS-1422-NM-012-XXXXX-XXX	12	4603	8285	3000	6000	2	3	282	128	29.9
GBPS-1422-NM-015-XXXXX-XXX	15	4603	8285	3000	6000	2	3	282	128	29.9
GBPS-1422-NM-020-XXXXX-XXX	20	4868	8762	3000	6000	2	3	282	128	29.9
GBPS-1422-NM-025-XXXXX-XXX	25	4691	8444	3000	6000	2	3	282	128	29.9
GBPS-1422-NM-030-XXXXX-XXX	30	4691	8444	3000	6000	2	3	282	128	29.9
GBPS-1422-NM-035-XXXXX-XXX	35	4691	8444	3000	6000	2	3	282	128	29.9
GBPS-1422-NM-040-XXXXX-XXX	40	4691	8444	3000	6000	2	3	282	128	29.9
GBPS-1422-NM-045-XXXXX-XXX	45	4691	8444	3000	6000	2	3	282	128	29.9
GBPS-1422-NM-050-XXXXX-XXX	50	4691	8444	3000	6000	2	3	282	128	29.9
GBPS-1422-NM-060-XXXXX-XXX	60	4337	7807	3000	6000	2	3	282	128	29.9
GBPS-1422-NM-070-XXXXX-XXX	70	3983	7169	3000	6000	2	3	282	128	29.9
GBPS-1422-NM-080-XXXXX-XXX	80	3452	6213	3000	6000	2	3	282	128	29.9
GBPS-1422-NM-090-XXXXX-XXX	90	3186	5735	3000	6000	2	3	282	128	29.9
GBPS-1422-NM-100-XXXXX-XXX	100	3186	5735	3000	6000	2	3	282	128	29.9

Part numbers are based on the specifications of the motor being matched to the gearbox.

-xxxxx denotes motor pilot, -xxx denotes input shaft diameter.

Refer to *Matching the Gearbox to Your Motor* on the second page for more information, or contact an Anaheim Automation Applications Engineer for assistance.

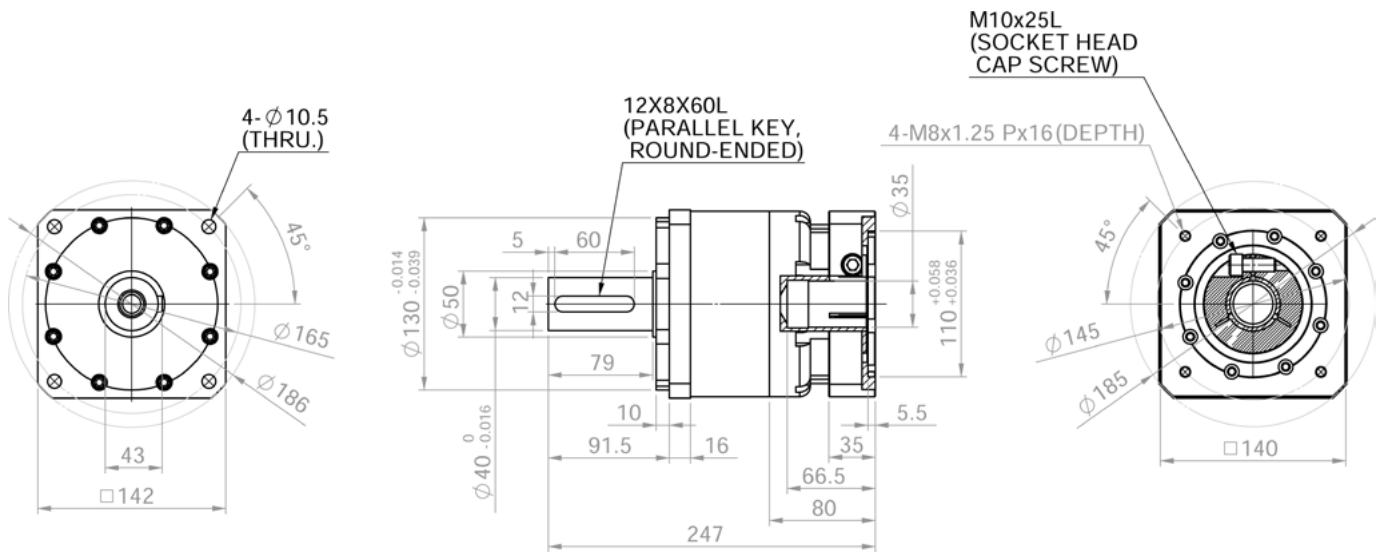
L011101

Matching the Gearbox to Your Motor

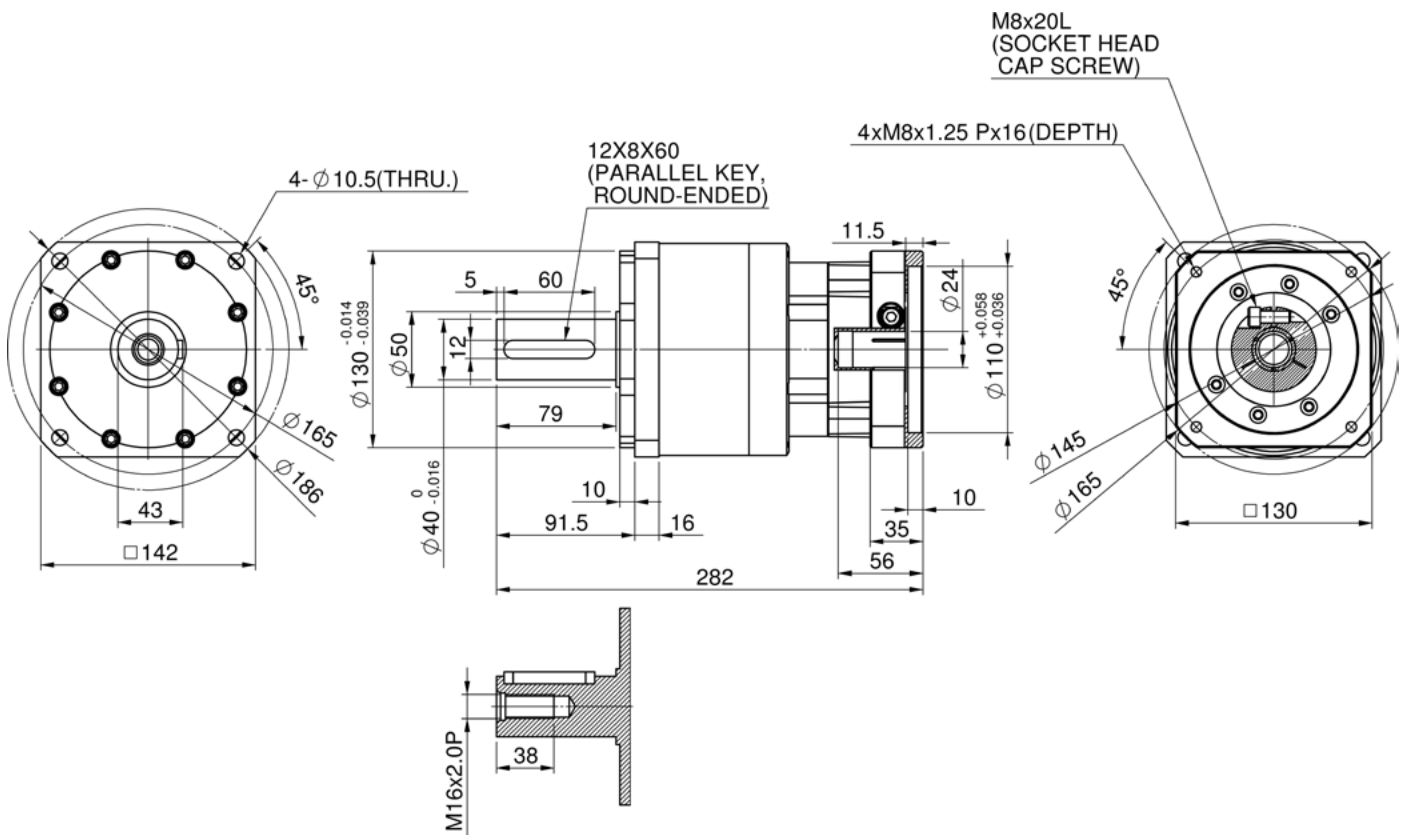
To ensure compatibility with the gearbox, it is important to consider that the motor specifications are within the listed ranges below. Motor Bolt Circle Diameter, Input Shaft Diameter, Input Shaft Length, Pilot Thickness, Pilot Diameter and Hole Diameter are required in order to match the motor with the appropriate gearbox, and will be used to determine the complete part number. Please see the Gearbox Mounting form downloadable from our website under Support -Technical Support - Installations for more information on required motor data.

Parameter	Range
Bolt Hole Circle Diameter	142mm
Input Shaft Diameter	35mm Max
Input Shaft Length	66.5mm Max
Pilot Thickness	6mm Max
Pilot Diameter	110mm Max
Hole Diameter	Any Size

1 STAGE DIMENSIONS



2 STAGE DIMENSIONS



Note: All dimensions are in mm



Gearbox Application Sheet

Please return via fax or email: (714) 992-0471, applications@anaheimautomation.com

Name: _____ E-Mail: _____

Company: _____ Phone: _____

Address: _____ Fax: _____

City: _____ State: _____ Zip: _____

Current Quantity Requirements: _____

Estimated Annual Requirements: _____

Motor Specifications:

Units: mm in

Bolt Circle Diameter (D3): _____

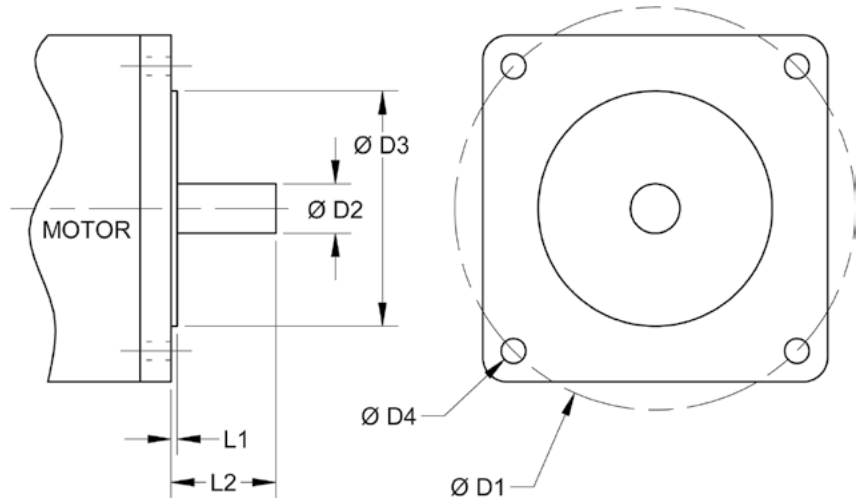
Shaft Diameter (D1): _____

Pilot Diameter (D2): _____

Hole Diameter (D4): _____

Pilot Thickness (L5): _____

Shaft Length (L4): _____



Gearbox Specifications:

Gearbox Part Number: _____

(Please provide an Anaheim Automation Gearbox Part Number if Available)

Please provide any additional information below:

